

VICINITY MAP
NO SCALE

CITY OF MODESTO COMMUNITY FACILITIES DISTRICT NO. 2012-1
(KIERNAN BUSINESS PARK SOUTH)
PROPOSED BOUNDARIES OF CITY OF MODESTO COMMUNITY FACILITIES DISTRICT
NO. 2012-1 (KIERNAN BUSINESS PARK SOUTH)
CITY OF MODESTO, COUNTY OF STANISLAUS, STATE OF CALIFORNIA



FILED IN THE OFFICE OF THE CITY CLERK OF THE CITY OF MODESTO THIS _____ DAY OF _____, 2012.

STEPHANIE LOPEZ, CITY CLERK

BY: _____

PRINT NAME

I HEREBY CERTIFY THAT THIS MAP SHOWING PROPOSED BOUNDARIES OF CITY OF MODESTO COMMUNITY FACILITIES DISTRICT NO. 2012-1 (KIERNAN BUSINESS PARK SOUTH), CITY OF MODESTO, COUNTY OF STANISLAUS, STATE OF CALIFORNIA, WAS APPROVED BY THE CITY COUNCIL OF THE CITY OF MODESTO AT A REGULAR MEETING THEREOF, HELD ON THE _____ DAY OF _____, 2012, BY ITS RESOLUTION NO. _____.

STEPHANIE LOPEZ, CITY CLERK

BY: _____

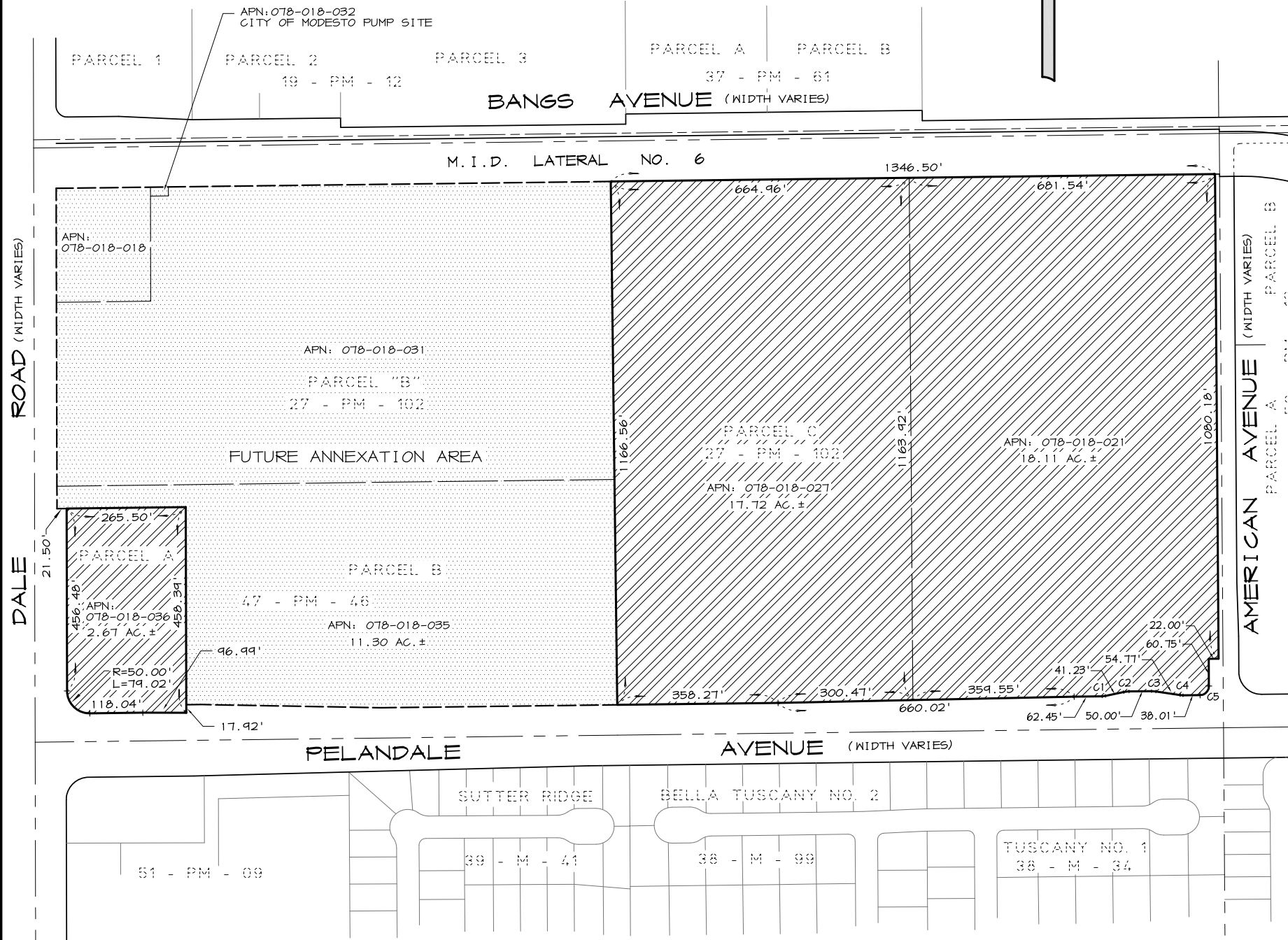
PRINT NAME

FILED THIS _____ DAY OF _____, 2012, AT THE HOUR OF _____ O'CLOCK ____M.
IN BOOK _____ OF MAPS OF ASSESSMENT AND COMMUNITY FACILITIES DISTRICTS AT PAGE(S) _____
IN THE OFFICE OF THE COUNTY RECORDER OF THE COUNTY OF STANISLAUS, STATE OF CALIFORNIA.

LEE LUNDRIGAN, COUNTY RECORDER OF THE
COUNTY OF STANISLAUS, STATE OF CALIFORNIA

BY: _____

PRINT NAME



LEGEND

- BOUNDARY OF PROPOSED COMMUNITY FACILITIES DISTRICT
- LIMITS OF FUTURE ANNEXATION AREA
- APN: ASSESSORS PARCEL NUMBER

CURVE TABLE		
CURVE	RADIUS	LENGTH
C1	37.50	7.38
C2	62.50	12.31
C3	62.50	10.00
C4	37.50	6.00
C5	20.00	31.32